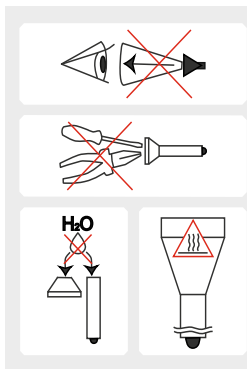


Warnings



1. Always follow the instructions from this manual and recommendations on battery usage.
2. Apply only the recommended power sources.
3. Do not reverse battery polarity.
4. Do not use different power sources together, i.e. old ones with new ones, charged with discharged. Do not use different types of batteries combined as the element with less capacity can be damaged.
5. Do not modify or recast the flashlight and its components as it will deprive you of the warranty.
6. Do not allow water or any other liquid to leak into the flashlight.
7. Do not aim a switched-on flashlight at people's or animals' eyes – it can cause temporary blindness.
8. Do not allow children to use the flashlight without your assistance.



The producer will not be liable for any harm done to the user if it was caused by improper use of the product.

Care and Storage

It is recommended to clean the threads and O-rings off dirt and old grease once or twice per year. Remember that reliable protection from water and dust cannot be provided by worn out sealing. The fouling as well as lack of lubricant cause fast wear-out of threads and sealing rings.

To clean the threads do the following:

1. Unscrew the tailcap and remove the sealing ring carefully with a toothpick (do not use sharp metal things as they can damage the ring).
2. Wipe the sealing ring thoroughly with a soft cloth (or tissue). Do not use solvents. If the sealing ring is worn out or damaged replace it by a new one.
3. Clean the metal threads with a brush using ethanol. Be careful not to allow the applied liquid to get inside the flashlight or tailcap as it can cause fails in functionality of the flashlight.

After cleaning lubricate the thread and the sealing ring with polyalphaolefin-based silica grease, e.g. Nyogel 760G. The application of automotive and other improper grease can cause swelling and damage of the sealing rings.

In case of active operation and exploitation in dusty environments, it is recommended to perform cleaning and lubricating of the parts as often as required.

Service and Warranty

Armytek provides free warranty repair for 10 years (excluding batteries, chargers, switches and connectors which have 2 years warranty) from the date of purchase.

Warranty doesn't cover damage caused by:

1. Improper usage.
2. Attempts to modify or repair the flashlight by nonqualified specialists.
3. Longtime application in chlorinated or polluted water, or other liquids (other than water).
4. High temperatures and chemicals' exposure (including the exposure of liquid from defected batteries).
5. Usage of low-quality batteries.

Armytek Optoelectronics Inc.

Web: www.armytek.com Email: service@armytek.com

Address: 13-85 West Wilmot St, Richmond Hill, Ontario, L4B 1K7, Canada

Specifications are subject to change without notice.

Tiara PRO Magnet USB

THE MOST TECHNICALLY ADVANCED
FLASHLIGHTS IN THE WORLD

• USER MANUAL •

Thank you for choosing the products of Armytek Optoelectronics Inc., Canada.
Please read this manual carefully before using the flashlight.

Specifications

Armytek Optoelectronics Inc. is a Canadian manufacturer that produces powerful and reliable flashlights designed especially for your needs. The components made in the USA and Japan. **10 years no-hassle warranty.**

- Superb light of amazing brightness due to powerful electronics.
- Rechargeable flashlight with magnet USB charger.
- Multi-flashlight "10 in 1" is for many activities: car, fishing, hunting, home, work, city, picnic, bike, outdoor, travel.
- Efficient TIR-optics and no "tunnel vision" effect even after continuous use.
- Side switch for comfortable one-hand operation and easy modes switching with advanced operation.
- Multicolor State Indication and ultra low current drain in OFF-state – more than 25 years.
- Comfortable headband for reliable fixation of the flashlight – it won't slip even while you're running.
- Solid body without long wires, weak rubber connectors and unnecessary boxes.
- Magnet in the tailcap, removable clip and possibility of tail-stand for multipurpose use.
- Total protection from water, dirt and dust penetration – flashlight continues to work even at the depth of 10 meters.

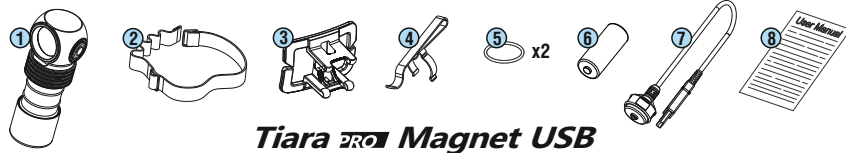
Model	Tiara C1 Pro Magnet USB	
LED / Optics	Cree XP-L / TIR	
Brightness stabilization type	FULL (constant light)	
Light output, LED / OTF lumens*	1050 / 900	
Peak beam intensity, candelas	2830	
Hotspot / spill	70° / 120°	
Beam distance*	106 meters	
Modes and runtimes (measured with 18350 Li-Ion 900 mAh until the light output drops to 10% of the initial value)	Turbo2	900 lm / 30 min
	Turbo1	440 lm / 1h
	Main3	220 lm / 2.4h
	Main2	90 lm / 6.5h
	Main1	34 lm / 15h
	Firefly3	6 lm / 2.5d
	Firefly2	2.5 lm / 8d
	Firefly1	0.4 lm / 60d
	Strobe3	1Hz / 90 lm / 90h
	Strobe2	1Hz / 900 lm / 3.3h
	Strobe1	10Hz / 900 lm / 1.7h
Power source	1x18350 Li-Ion	
Size and weight (without batteries)	Length 79mm, body diameter 24.5mm, head diameter 29mm, weight 60g	

* Light output for flashlights with Warm light are about 7% less, beam distances are about 3% less.



Remember that old or low-quality disposal batteries can be damaged under heavy load and explode.

Set description



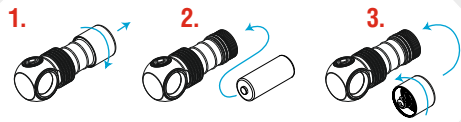
Tiara PRO Magnet USB

Items included in the package:

- | | |
|--------------------|--------------------------|
| 1 - Flashlight | 5 - 2 spare O-rings |
| 2 - Headband | 6 - 18350 Li-Ion battery |
| 3 - Plastic holder | 7 - Magnet USB charger |
| 4 - Clip | 8 - User manual |

- ! Your flashlight can inconsiderably differ from the pictures in the manual.
! The producer reserves the right to change the package at his own discretion without modifying this manual.

Initial Service



To set/replace batteries:

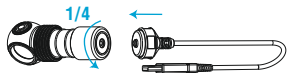
1. Unscrew the tailcap.
2. Place the batteries with the positive contact (+) facing the head of the flashlight.
3. Adjust the tailcap and tighten it as far as it can go.

The flashlight is ready for operation.

- ! We DO NOT RECOMMEND to leave power sources inside the flashlight for a long storage period, as batteries (especially, non-rechargeable) can leak for various reasons and damage the inner parts of the flashlight. If you want to keep your flashlight in a stand-by state with batteries in then use new and high-quality batteries and store the flashlight in acceptable for batteries operational temperature and revise the batteries' state at least once a month. If you have noticed any signs of batteries' defects then withdraw them from the flashlight and utilize. It is also recommended to replace discharged batteries with new ones before the storage as the chance of leakage is higher with discharged batteries.

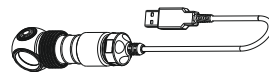
How to turn on a magnet charger:

Unscrew the tailcap for 1/4 of a circle and turn on a magnet charger device to the tailcap.
Approximate time for charging a fully discharged battery is 6-8 hours. We recommend using adapters with 1A and higher.



Charger device battery indication:

1. Red color – the charging is going on.
2. Green color – the charging is finished.
3. Red color blinking – unscrew the tailcap for 1/4 for charging.



To use the headmount with the flashlight:

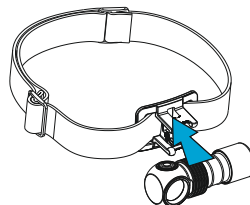
1. Put in the band in the first clasp.



2. Pass the end of the band through the second clasp and fix it.



3. Put in the band through the slots in the plastic holder and fix the flashlight. Adjust elastic band to the size of your head.



Operation

Click x2

Main → Firefly
Any Mode → Main

Press & Hold

Main1 → Main2
Main3

Main



The flashlight has 4 Sections of modes:

[Section 1] – Firefly modes
[Section 2] – Main modes

[Section 3] – Turbo modes
[Section 4] – Special modes

In OFF state:

Click: To turn on the last used mode.

Press and hold: To turn on Firefly1 mode in [Section 1].

In ON state:

Click: To turn off the flashlight.

Press and hold: To start cycling through the modes of actual Section.

The same in OFF & ON states:

2 clicks: To turn on the Main mode [Section 2]. Then double clicks will switch modes between chosen modes in [Section 1] and [Section 2].

3 clicks: To turn on Turbo mode [Section 3].

4 clicks: To turn on Strobe mode [Section 4].

Flashlight has 2 types of operation:

1. **General.** The flashlight is switched on/off by 1 click.
2. **Tactical.** The flashlight will switch on in the last used mode only for the time the button is being pressed. This type of operation is useful for short-time lighting and setting signals.

To access the Tactical operation type, unscrew the tailcap to 1/4, press the button and tighten the tailcap again keeping the button pressed.

To return to the General type – press the button and while keeping it pressed – unscrew the tailcap to 1/4.

Automemorizing. After switching off the last used Mode is memorized for quick 1-click access at next switching on.

Lock-out function. Unscrew the tailcap to 1/4 for the protection from accidental switching on. State Indication will be turned off.

Multicolor State Indication. Shows the battery level by short flashes every 5 seconds.

Switching Multicolor State Indication ON/OFF. It is switched off by default in OFF-state and Firefly modes. To turn on and off: unscrew the tailcap to 1/4, press the button and holding the button pressed – tighten the tailcap and then unscrew it again. The settings will be memorized even when battery is changed. Ultra-low current consumption allows color indication to work for more than 25 years.

Click x2

Firefly
Main

Press & Hold

OFF → Firefly1
Firefly1 → Firefly2
Firefly3

Firefly



Click x3

Any Mode → Turbo

Press & Hold

Turbo1
Turbo2

Turbo



Click x4

Any Mode → Strobe

Press & Hold

Strobe1 → Strobe2
Strobe3

Strobe



Switching State Indication

Battery level

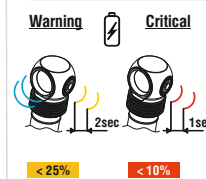


ON / OFF

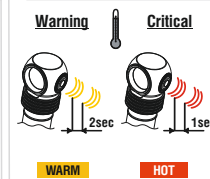


Press & Hold

Low Battery Indication



High Temperature Indication



Warning indication shows the battery level and the temperature inside the flashlight.

Low battery level. When it is <25%, the color LED will show the warning level – flashing in orange color once in 2 second. With a further voltage reducing brightness will start to decrease in steps for safety of the battery and user. If brightness will be <25% from nominal value, the main LED will flash 2 times. Critical battery level <10% is red indicated once a second.

High temperature. When it increases to the warning level – the color LED flashes by orange 3 times once in 2 seconds. At critical level – it flashes by red 3 times once in 1 second, brightness starts to reduce. After cooling down the brightness increases to usual level.

Constant light. Powerful electronics provide constant brightness even in the Turbo1 mode, using all energy of the battery. And the Turbo2 mode gives the maximum brightness as the Overboost technology in cars, but until temperature of a flashlight and a discharge current of the battery don't exceed critical values.

Digital Light Stabilization & Safe Soft-Start System monitors battery voltage, starts the flashlight at an admissible brightness or decreases it by steps when the voltage dramatically fall down. These actions increase runtime, use all available energy, get longer lifetime of rechargeable battery and protect it from overdischarge or overheating.

Active temperature control. The flashlight can heat up in Turbo mode quickly. When the temperature become +60°C – the brightness decreases by small steps. After cooling-down (provided that battery voltage is sufficient) the brightness increases to the Turbo mode again. This stepping goes cyclically to maintain the user's safety and the flashlight's functionality. In conditions of good air-cooling the flashlight delivers light without stepping down even in Turbo mode. There are no preset timers for stepping, but real-time active temperature measurements.